



**MAGIC BOX**

+

**Brochure**

HOUSES BUILT WITH PRECISION  
WORKMANSHIP...

☎ 0532 579 31 57



SHIPPING CONTAINERS





# **“PRACTICAL LIVING IN MODERN CONTAINER HOUSES”**



# PERIOD

## Cabin Selection

A specially selected zero container is selected.



## Interior And Exterior Design

Interior and exterior drawings of the person's needs are made.



## Order Agreement

After the design work is completed, the process begins with the contract phase.



## MAGIC BOX Ready for Delivery

Grounding of the project and realization of deliveries.

A new lifestyle, the next steps will be very easy, contact us and let's start the process. Room planning, layouts and 3D packaging are prepared entirely according to customer demand.

Every MAGIC BOX module produced is produced specifically for you...

SMALL HOUSES .  
GREAT OPPORTUNITIES.

OUR CONCEPT

MAGIC BOX



# OVERVIEW

40 DC - HC

## 40' dry

Length: 12.03 m

Width: 2.35 m

Height: 2.39 m

Door width: 2.34 m

Door height: 2.28 m

Max payload: 28.80 t

Capacity: 67 cbm

Max EUR pallets: 25



20 DC - HC

## 40' HC Container :

This type of containers are used to transport relatively light but high volume goods. Their height is 30 cm higher than the normal 40' container.

# OVERVIEW

20 DC - HC

## 20' dry

Length: 5.90 m

Width: 2.35 m

Height: 2.39 m

Door width: 2.34 m

Door height: 2.28 m

Max payload: 28.20 t

Capacity: 33 cbm

Max EUR pallets: 11



40 DC - HC

### 20 DC Container:

It is expressed by creating the smallest version of standard containers.

## FEATURES OF OUR HOMES

- Durable glass doors and windows
- Environmentally friendly plaster walls
  - Wear-resistant floor covering
- Water-saving plumbing appliances Energy saving LED lights
  - Low/No-VOC paints, primers, adhesives and sealants
  - Energy-saving water heater



Each MAGIC BOX product, which has an environmentally friendly design built for sustainable living, is transformed into a special, portable, happy home for you.



With the use of materials suitable for all conditions, MAGIC BOX offers you a unique and sustainable future. we are in harmony with our valued customers with our two models, 12 meters by 6 meters.

## SMALL AREA BIG STYLE

Tough on the outside and stylish on the inside, each MAGIC BOX is designed for; Meet your uniqueness ; NEEDS... Living rooms, kitchen, bedroom and bathroom are all designed for you. Whether you are raising children, want a family or a comfortable living space, the MAGIC BOX is here for you.



### STYLE BY DESIGN

Stunning surfaces, modern amenities, state-of-the-art devices and handmade design are offered as standard.

### READY FOR LIFE

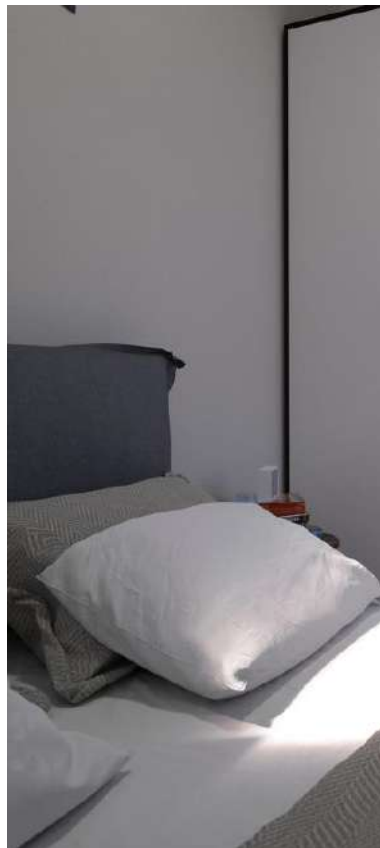
The MAGIC BOX is coming... It is sent as a detached, luxurious house. Minimum installation is required and it is produced according to your wishes. Your house is shipped within weeks and arrives 100% ready to move in.

## UNLIMITED LIFE...

Let the open air in. The MAGIC BOX is designed to provide a multi-purpose living space that extends from the inside to the outside. Just open the cargo doors to fill your home with natural light and fresh air. Jul. The living room has a two-seater sofa, a flat-screen TV and a coffee table. There are enough sockets to connect TV, internet and all your devices.

## LUXURIOUS LIVING SPACE





LUXURIOUS  
LIVING SPACE

**UNLIMITED LIFE...**

Home, Showroom, Apartment, Office, Shop, Gallery, Stall, Warehouse, Gym, Sauna ..We produce stylish and convenient spaces from each other with Shipp Containers. We offer the possibility of application either side by side or on top of each other with modular combinations.

## LIFE-SIZED AMENITIES

MAGIC BOX is a structure suitable for modular combination. Post-design pricing can be made for every modular assembly except standard single cabins.



Your home has been carefully designed and built without compromising on comfort or function. Every detail has been carefully planned to maximize space, while offering the most important functional amenities and features, such as a full-size kitchen and bathroom.

# MAGIC BOX



### OPEN THE WINDOWS...

Illuminate your home with natural light or lighting only when you need it - the choice is yours. Customizable window and lighting options provide balance and mood to find the perfect one.

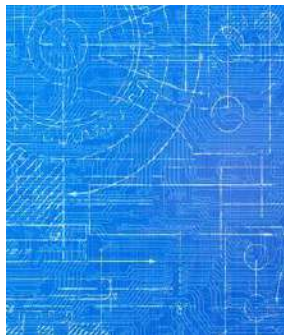
Floor-to-ceiling window options allow light to enter and give the space a natural and open feeling.

### MODERN LIGHTING...

Built-in, you have full control over the LED lighting system, Sconce, Spotlight, light in your home.



## SIMPLE &amp; SOPHISTICATED



A meticulous design far below the size and cost of traditional houses. Every detail of our spaces is planned and analyzed to maximize the space. it provides efficiency while keeping the space comfortable and inviting.

# MAGIC BOX

## SIMPLE &amp; SOPHISTICATED



40 DC - HC



20 DC - HC



# DETAIL

## isolation

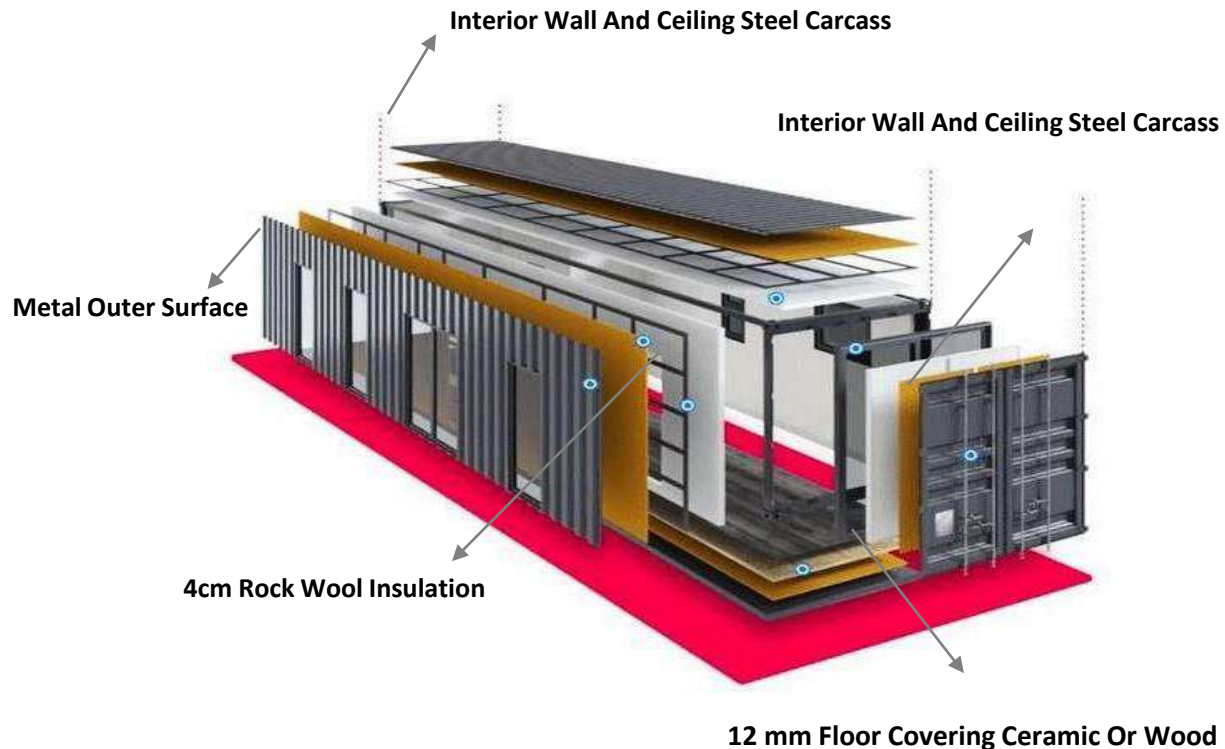
**INSULATION** All of the interior Decking walls, including the intermediate partition walls, are insulated with a high level of 6 cm polyurethane compression foam + rock wool plates for a total of 10 cm. The technical cross-section of the insulation is as follows

## MECHANICAL INSTALLATIONS

Fireproof Halogen Free electrical cables are used in all of our modules in accordance with European standards. All fuses are Siemens brand, all key sockets are fully prepared with viko karre series, tv infrastructure, smart home adaptable data lines and channels suitable for solar energy infrastructure.

## UNDERFLOOR HEATING

A carbon film underfloor heating system is made in all our modules, which you can control from your phone via Wifi. in a 1+ 1 module, 2 different control panels are used, including a separate living room and a separate bedroom.



# DETAIL

## FURNITURE GROUP KITCHEN

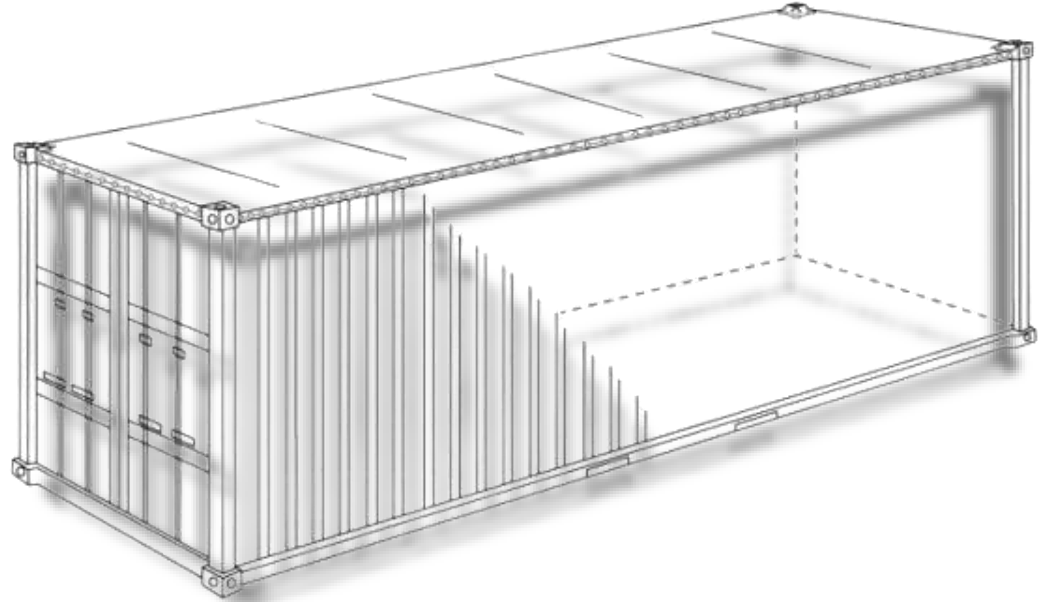
Mdf lam main bodies,with cover colors to be selected from the AGT color chart 1.a classroom kitchen is being prepared.Parquet; Insulation and parquet suitable for underfloor heating system are selected from AGT-FLOORPAN-ÇAMSAN companies' cartels and applied.Interior Doors; Lacquered doors are used in colors compatible with the decoration colors.

## BATHROOM

Hüppe Shower Cabin, Vitra and Artema toilet seats and armatures are used. Ceramic is applied on the floor and inside of the shower area.

## GLASS FIELDS

Double heat glass and pcv window system are used in all glass areas. Aluminum joinery is offered as an option.





Reinforced inner steel  
frame



Premium  
Insulation



Ceiling Light  
System



Safe Energy-Saving Doors  
and Windows



Full bath



Bath



Kitchen



Integrated, Water Heater  
System



Suitable for  
Every Climate



FEATURED COMPONENTS



# PRICING

## MAGIC BOX

12 meters Length – 3.20 meters Width - 2.70 meters Height = 38.5 m2 Net Internal Volume

**27.000 EURO**

## MAGIC BOX 2

12 meters Length – 2.40 meters Width - 2.70 meters Height = 28.5 m2 Net Internal Volume

**22.000 EURO**

## MAGIC BOX STORE

6 meters Length – 3.20 meters Width - 2.70 meters Height = 19 m2 Net Internal Volume

**18.500 EURO**

## MAGIC BOX STORE 2

6 meters Length – 2.40 meters Width - 2.70 meters Height = 15 m2 Net Internal Volume

**13.500 EURO**



With MAGIC BOX, affordable price does not mean cheap. We have eliminated the middleman and ostentation, the sales staff is ready to offer you the best house that money can buy...



## DURATION / PAY PLAN

### Delivery Time

The production time for each product is 4 Weeks. The use of optional options and modular assembly products vary in this period of time.

### Pay Plan

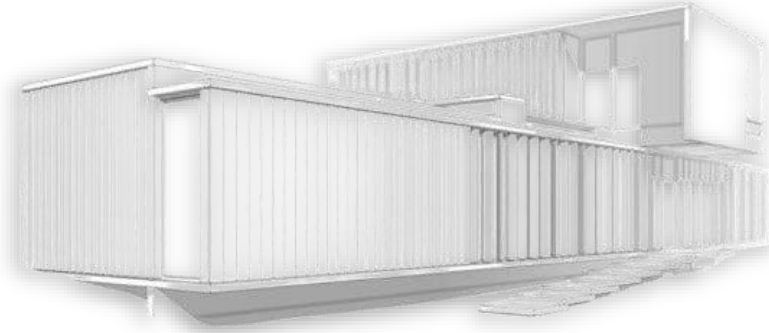
**Contract Date Order Payback: 65% Advance Product Delivery : 35% Final Payment**

### Details

- Product delivery is carried out with 1 supervisor and 2 technical staff working within our company.
- The products are Izmir factory delivery prices. Contracted transportation according to the shipping address the price is charged from our partner.
- The crane service required for the delivery of the product belongs to the employer.
- Routing and installation connections are made by our personnel.



MAGIC BOX



Magicboxcontainer@gmail.com



0532 579 31 57

- Izmir Factory Address -

Zafer Mah. 2309 SK. NO:44 Buca , İZMİR